

# A Just Energy Transition:

*What's my part?*



**Haley Coutts** (she/her)  
Associate Electrical Engineer

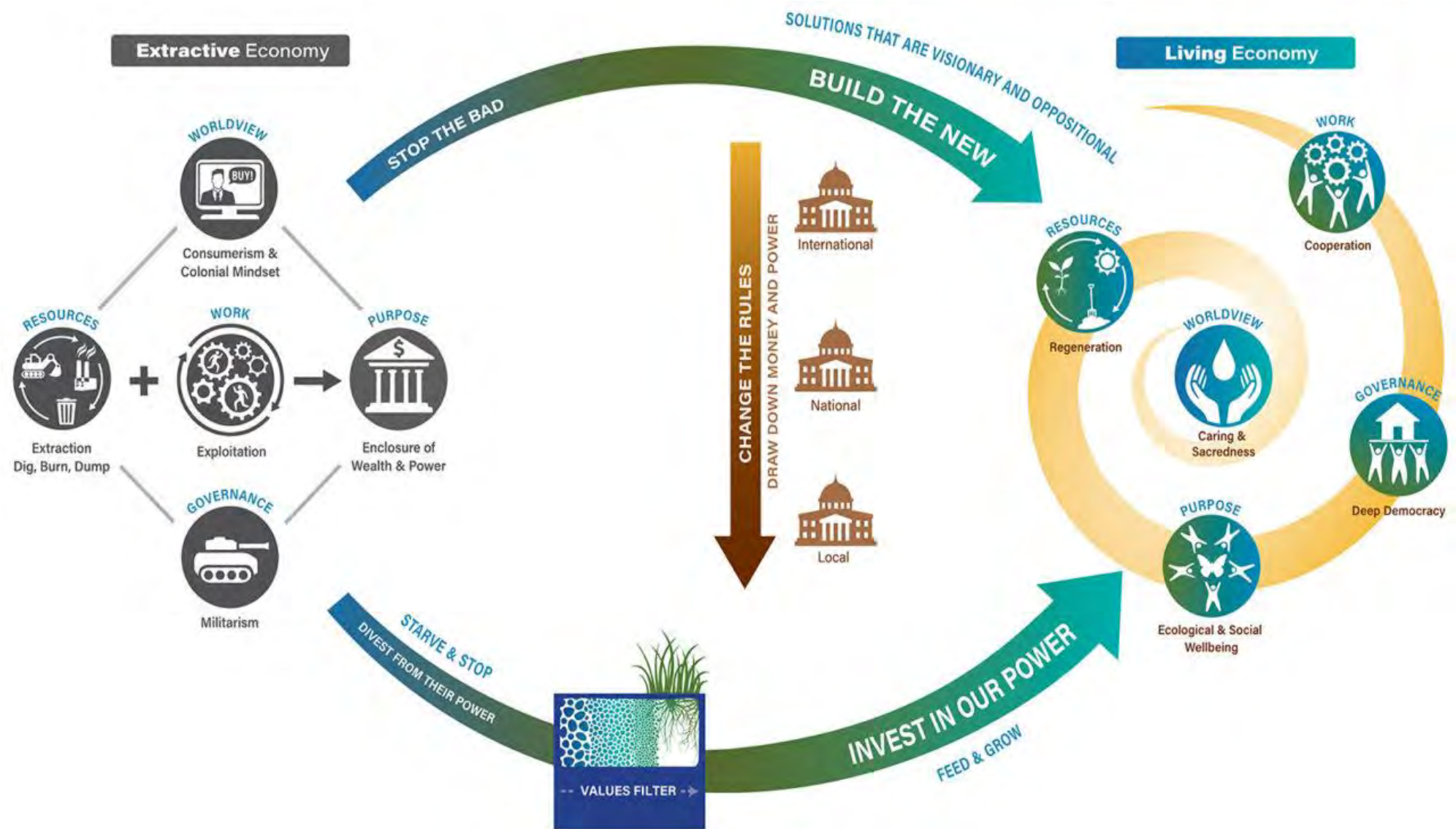
**Grecia Elenes** (she/her/ella)  
Environmental Equity Advisor

**Reagen Price** (she/her/hers)  
Race & Social Justice Program Manager

# Session Goals

---

1. To introduce the concept of a just transition
2. To introduce practical tools engineers can use to incorporate equity strategies into their portfolios and projects
3. To introduce a feature case study modeling a strategic equity integration



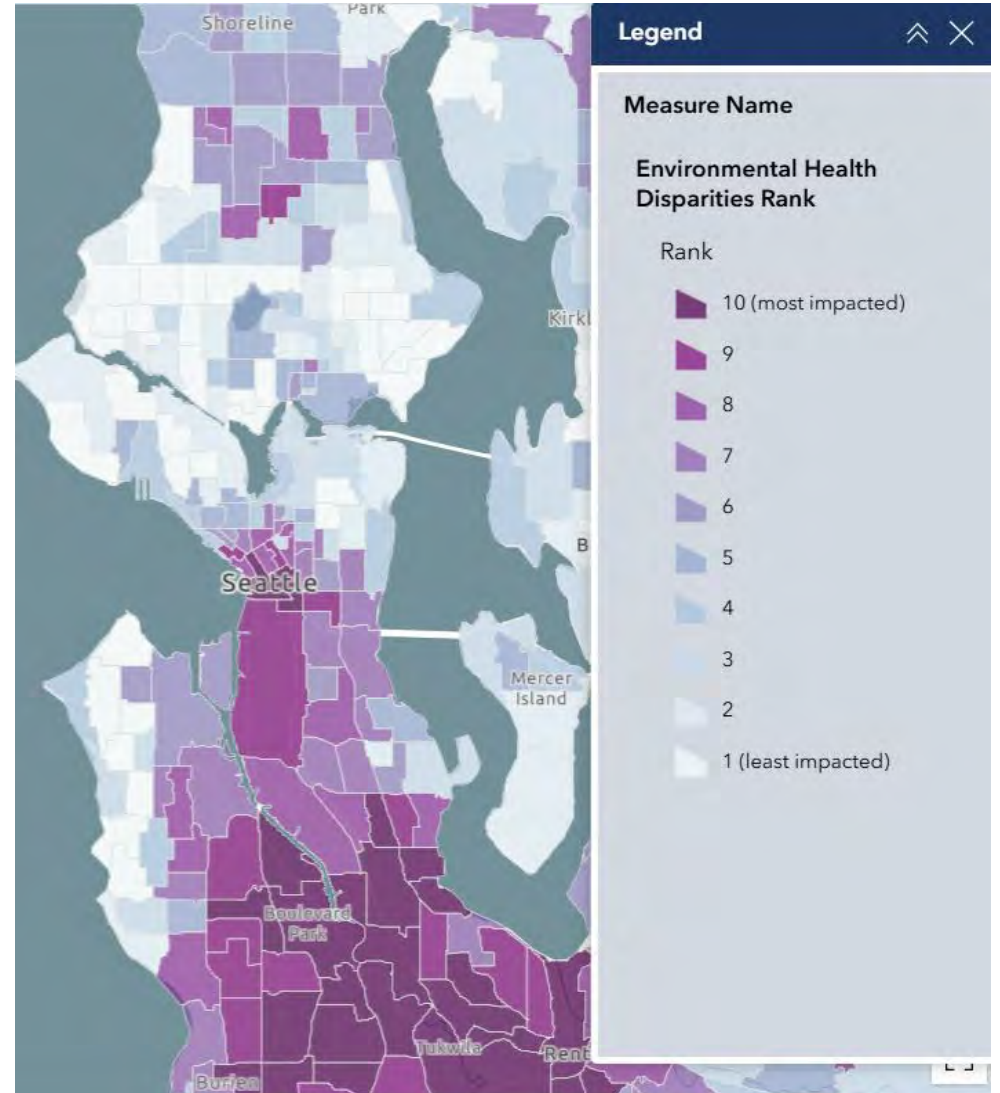
**Just Transition** is a framework ensuring an **equitable shift** to a low-carbon economy **centering workers and communities** historically most impacted by polluting industries.

# Key Terms

**Energy Equity** ensures everyone, especially EJ and Highly Impacted Communities, have access to clean, affordable, reliable energy.

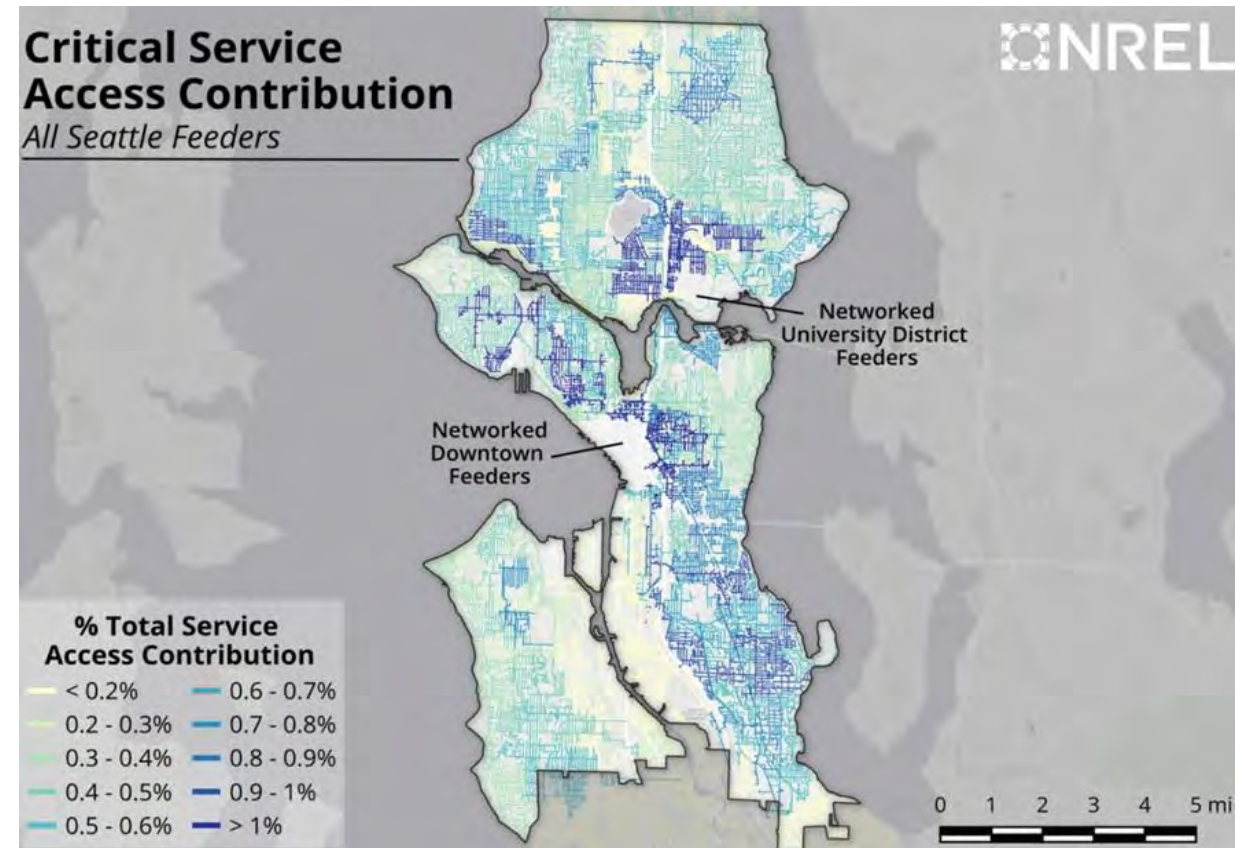
**Environmental Justice (EJ) Communities** are neighborhoods, often with high BIPOC and/or low-income populations, disproportionately burdened by pollution resulting from discriminatory land-use and zoning practices.

**Highly Impacted Communities** are Tribal land or communities ranking 9 or 10 on Washington's Environmental Health Disparities Map which evaluates and ranks Washington census tracts based on environmental and socioeconomic indicators affecting overall health.



# Case Study: Critical Service Access Metric

- Utilities plan using system-level reliability metrics (e.g., outage frequency and duration)
  - These metrics do not reflect lived experiences or community priorities
- Collaborated with National Laboratory of the Rockies and University of Washington to create a metric that enables **strategic siting of resiliency investments to best support community's access to critical services**



# Process

## Initial Data Analysis

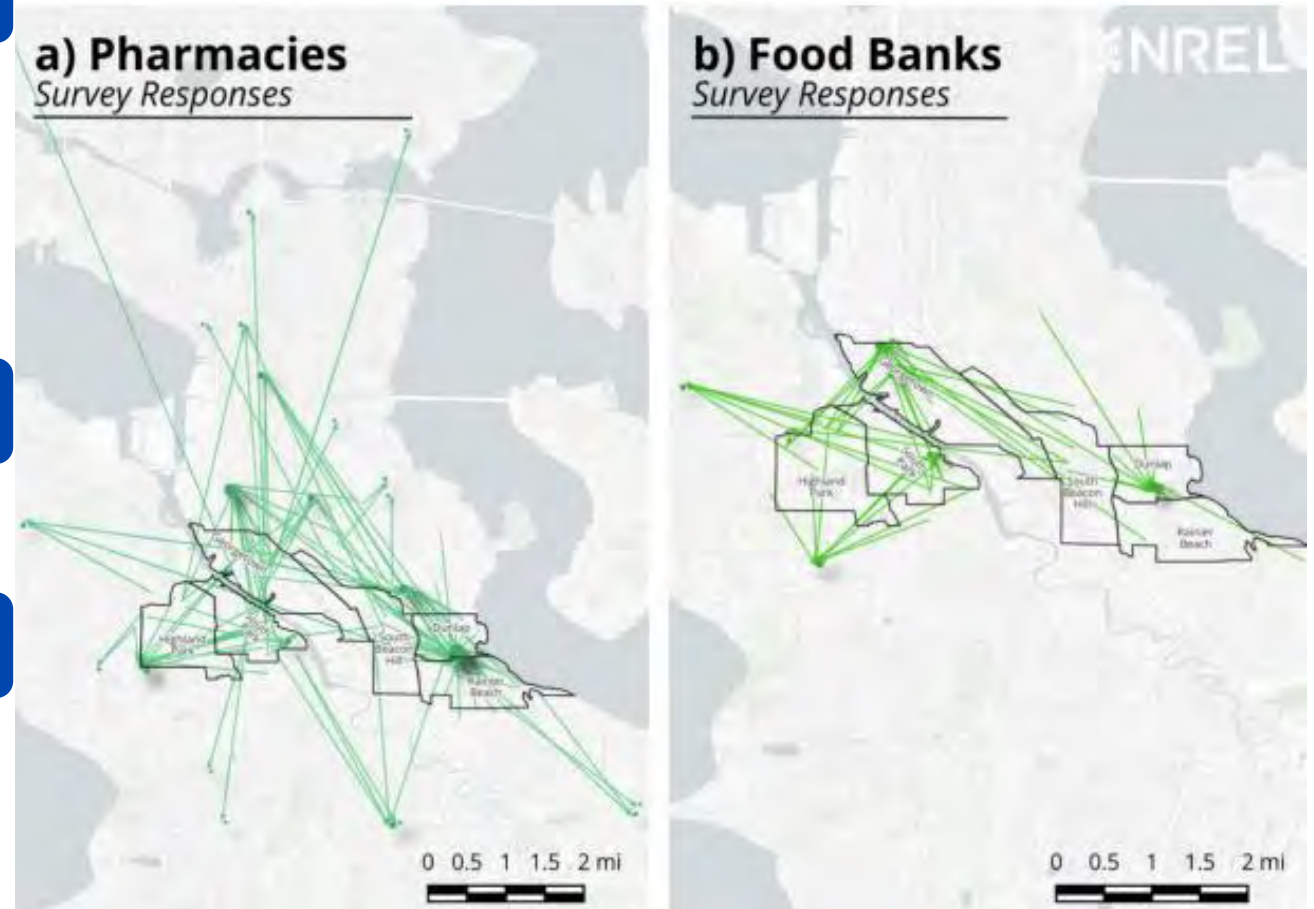
- Distribution Network Connectivity
- Loading Characteristics
- Outage History
- Demographic Data
- Location and usage of services

## Community Engagement

- Survey
- Focus Group

## Metric Creation and Investment Proposals

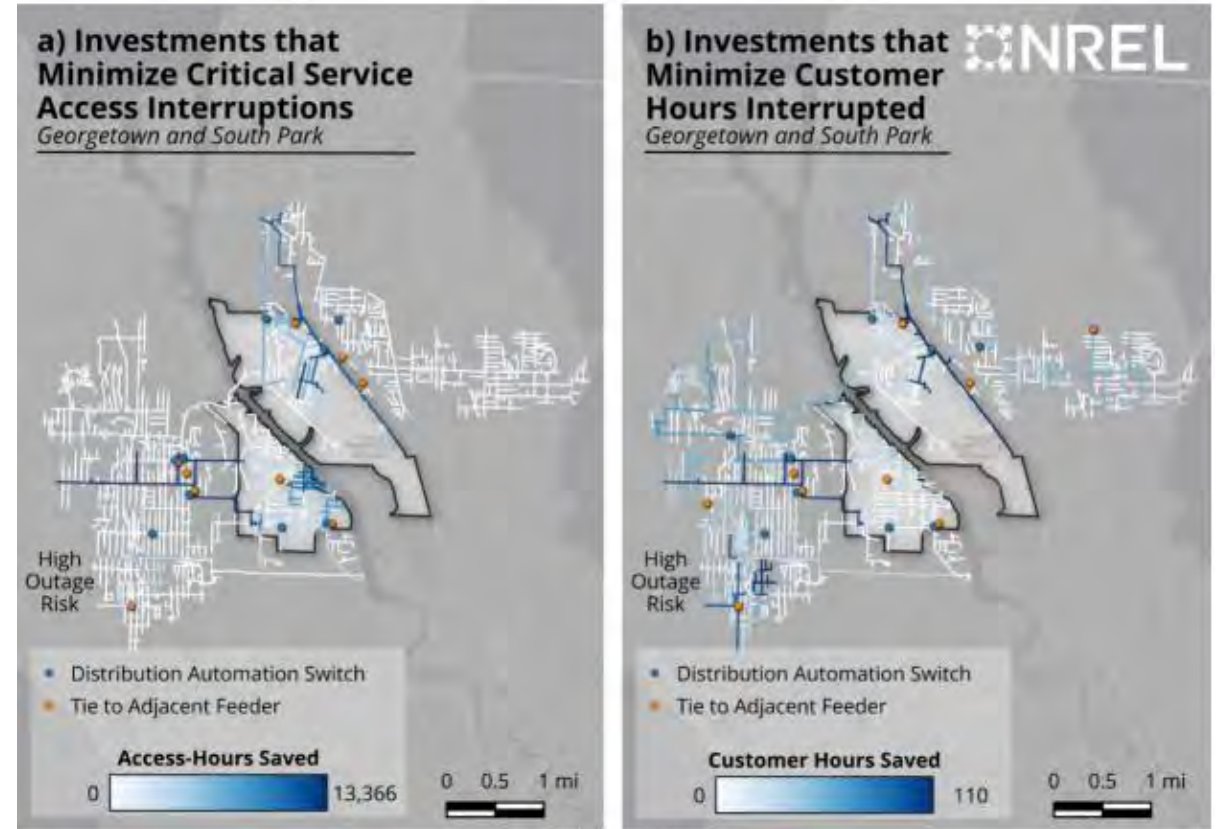
- Critical Service Access calculated at a neighborhood level
- Predictive Outage Analysis at a sub-feeder level
- Proposed location of switches for greatest resilience impacts



Lines trace from pharmacies and food banks to the census block centroid of the respondent who selected them

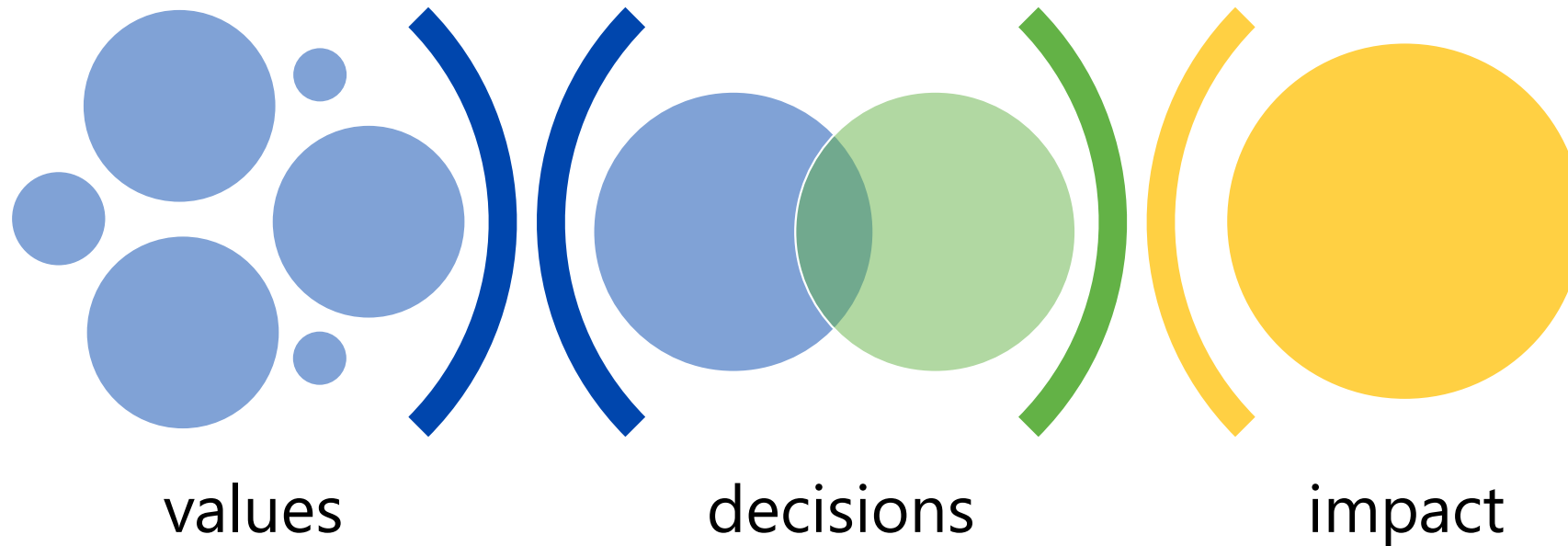
# Takeaways

- **Human-centered** consequences of power outages are not demonstrated with traditional reliability metrics
- Allow for deeper thinking into **who is benefiting** from grid investments
- Leveraging **community expertise** in development of the metric emphasized data limitations



---

We aim to align our values-driven intentions with meaningful impact by *shifting how we make decisions*.

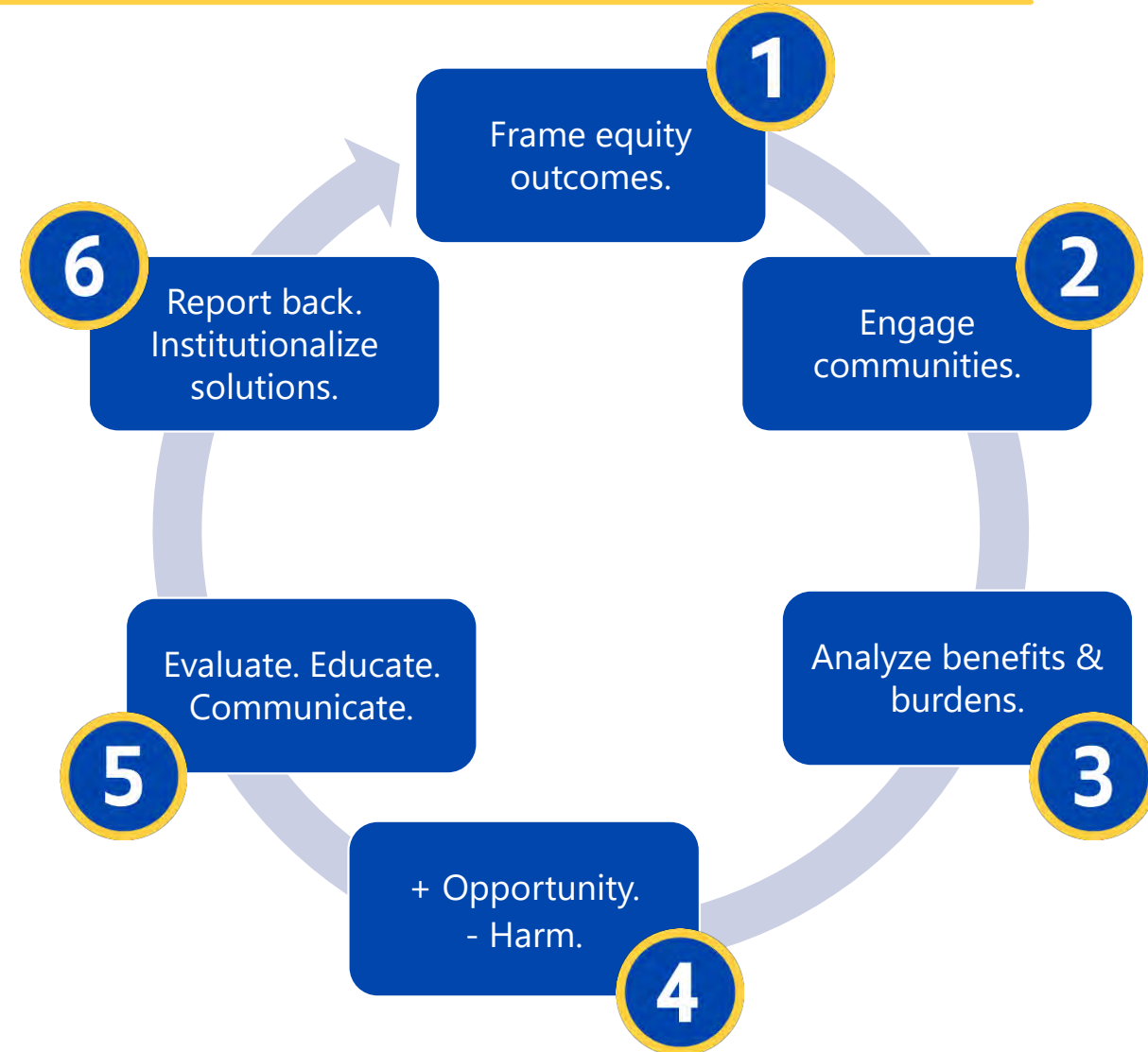


# Racial Equity Analysis

A racial equity analysis is a routine examination of how different racial groups will likely be affected by a proposed decision.

The City of Seattle Racial Equity Toolkit is designed to:

- To **bring awareness** to racial inequities
- To **engage** in decision-making the stakeholders most adversely affected by current conditions
- To **avoid** or minimize unintended consequences
- To **prevent** institutional racism from occurring or reoccurring



# What does this mean for projects we develop?

## Relationships matter.

- A rising tide lifts all boats. The margins benefit the center.\*
- Engage marginalized customers in the decisions that impact them.
- Transactional efforts are *always* tokenizing.
- Partner with us to (re)build relationships.

## Big picture. Future focused.

- Energy Equity is achieved.
- ALL customers access energy without burden.



Inputs



Activities



Outputs



Outcomes



Impact

## Everything is data.

- Lead with race explicitly but not exclusively.
- Framing is critical.
- Narrative data is data.
- Observations are data.
- Mitigation strategies require accountability plans.
- Recommendations influence urgency.

# *“Transition is inevitable. Justice is not.”* – Climate Justice Alliance

---



Respect, learn from, and integrate Indigenous knowledge.



Center people and value their lived experiences & expertise.



Create meaningful opportunities for communities to shape decisions and lead processes.



Embrace continuous learning and improve your practice.



Be aware of how your choices impact people, systems, and outcomes.

# THANK YOU

---



**Seattle City Light**