



Building Modern Transmission Infrastructures: Strategies for Success

Andra Flaherty

Who We Are



Proudly Public Power & Water

Created by voter initiative in 1936



97% carbon-free power supply



2nd largest public utility in Washington state



850,000 people and **20,000** businesses served

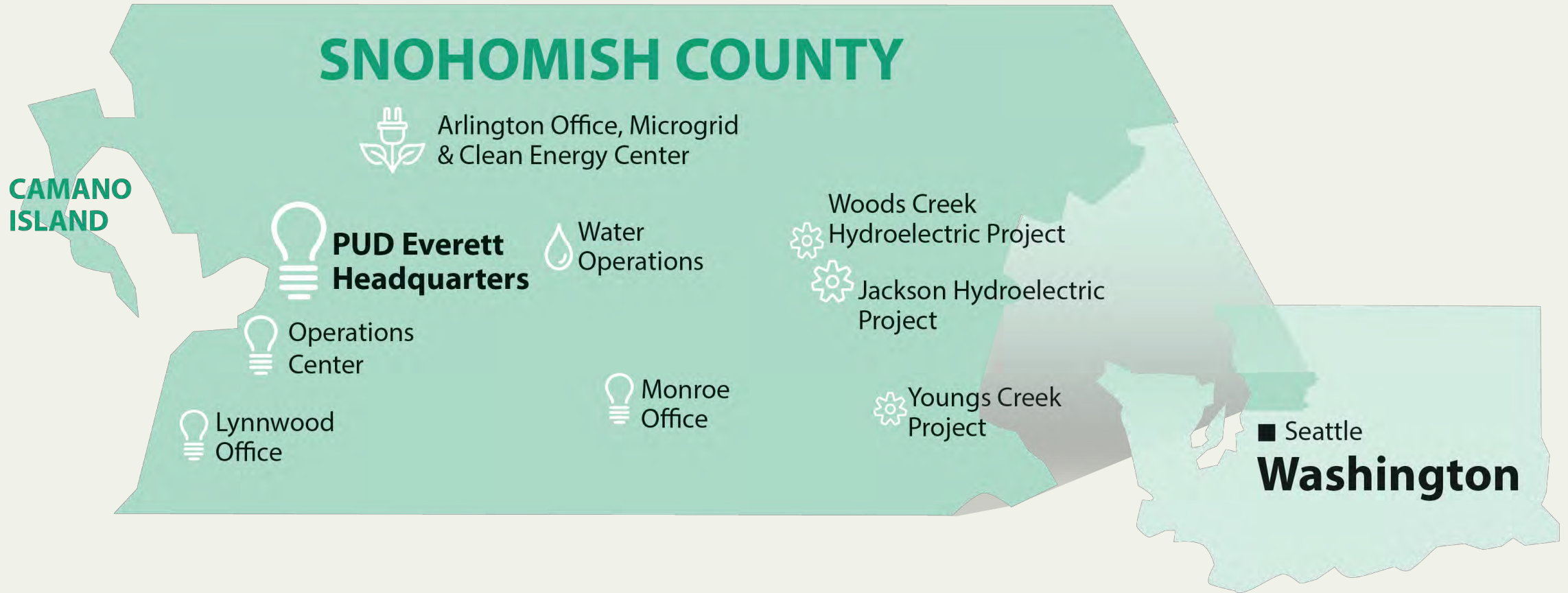


Where Everyone Feels Welcome

1,100 employees



Where We Are



Incredible Growth

- 2nd fastest growing county by population in Washington State
- Expected an additional 115,000 residents by 2033
- Need to meet growing capacity
- Multiple new 115kV lines in the works
 - Focus today on Crosswind and Everett-Delta



Crosswind 115kV Line

5 routes were studied to find a route that met timeline, cost and feasibility.

We looked at

- permitting challenges
- clearance challenges
- number of turns
- least impactful



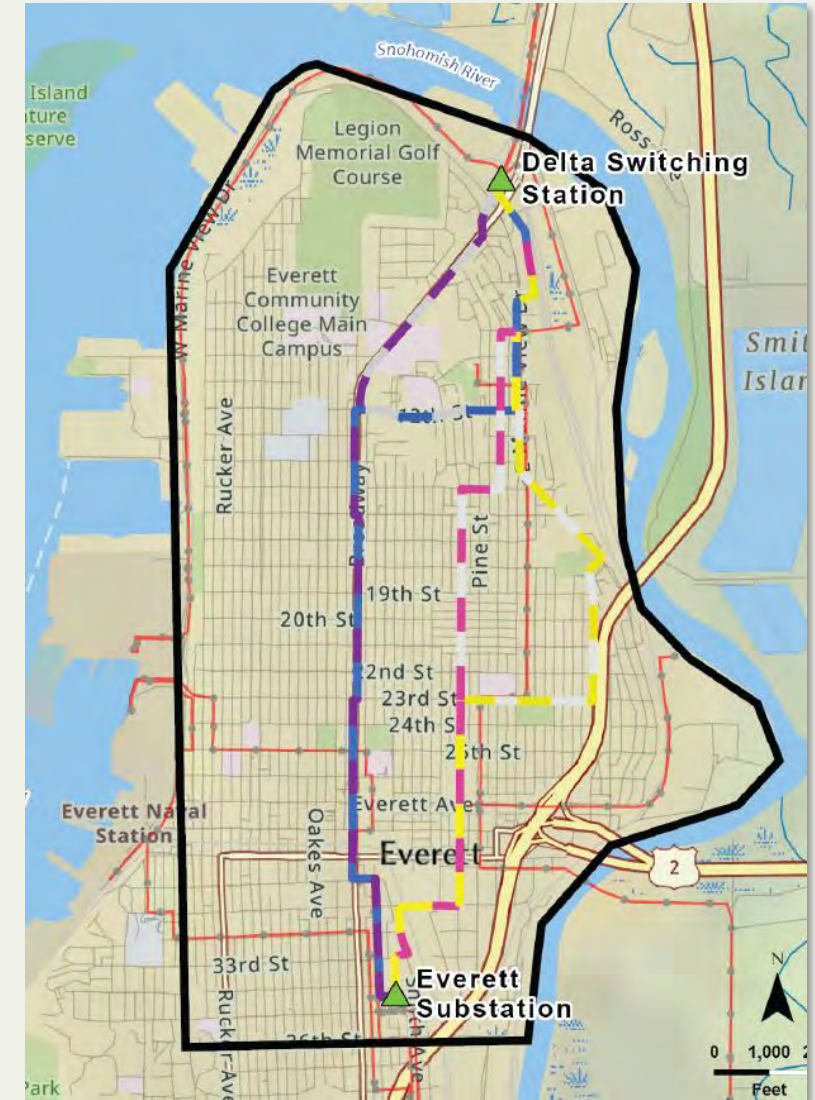
What came after the route was chosen

- Route is by an airport
- Pilots concerned with the height of the poles
- Obstruction and land use study completed by the FAA
- Open house at the airport
- Presentations with City Council
- Easements approved
- Construction starts April and finishes end of the year



Everett to Delta 115kV Line

- Hired a consultant to perform a route study
- Met to give parameters
- Preliminary results show pink as being favored
- We have an open house to share with the public



Chaos Breaks Out

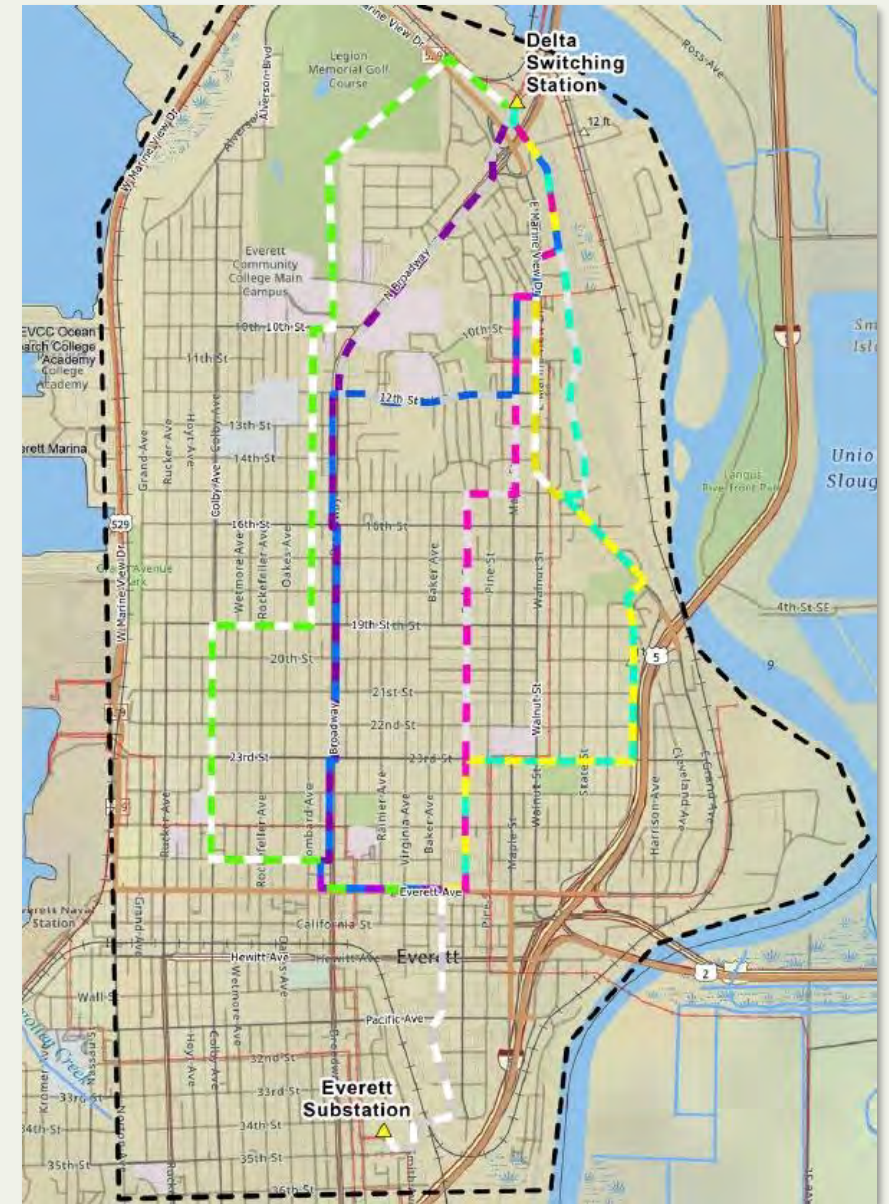
- Major public outcry
- Bad publicity article in the Herald
- King 5 news did a segment
- Commission requests to be briefed
- Request consultant to look at more routes



Adding New Routes

- Met with the Mayor & staff
- Met with community transit
- Neighborhood outreach

Sometimes you come out ahead not going with the cheapest route



Lessons learned

Engage early and often

Route selection is more than cost

Visuals and context matter

Expect and plan for public reaction

Flexibility leads to better outcomes

Coordination and transparency build credibility